



Tour 3: Where the Outback Ends: tropical rainforests, a cattle station, and a private Aboriginal tour In Far North Queensland

Especially Prepared by Down Under Answers for Essential Down Under Travel

Meals included indicated by:

- (CB) Continental Breakfast
- (B) Full Breakfast
- (BH) Breakfast Hamper
- (L) Lunch
- (D) Dinner

Day 1

Welcome to Cairns, Australia/Cairns to Atherton Tablelands (Rental Vehicle)

Welcome to Cairns! Upon arrival on board your flight, please enter into the arrivals hall. Once you have collected your luggage please make your way to the Hertz counter for collection of your Class R-Toyota Landcruiser (manual) rental vehicle for self drive to Rose Gums Wilderness Retreat in the Atherton Tablelands.

Rose Gums Wilderness Retreat Cairns offer secluded accommodation with spectacular views of Mt Bartle Frere. Set on 230 acres at the edge of the Wooroonooran National Park, the retreat boasts 9 self-contained tree houses with balconies, fireplaces, spas and boasting stunning views. The tree houses are set 200 metres apart, ensuring your privacy.

Accommodation: Rose Gums Wilderness Retreat x 2 Nights
(1 Bedroom Tree House)

Day 2

(BH)

Morning Birding Tour / Afternoon Free (Rental Vehicle)

A Breakfast Hamper will be provided for you this morning including bacon, eggs, bread, butter, jams, organic yoghurt, cereal, muesli, milk, sachets of coffee, tea & sugar, ground coffee with plunger, and tim tams!!!!



This morning, enjoy a guided bird watching tour with your host Jon for 2 hours at Rose Gums. This afternoon is free for you to spend at leisure exploring the area. Experience a nature lover's paradise for your holiday getaway:

- Enjoy living in a pole & timber treehouse in our cool tropical climate treehouses

- Wonder at our spectacular rainforest and mountain scenery
- Explore the walking tracks through our 230 acre property walking tracks
- Escape to total privacy with no sign of civilisation (not even another treehouse)
- Experience exotic Laos cooking by our in-house chef Mr Lee 7 nights a week (additional cost).
- Discover platypus in our pristine rainforest creeks platypus
- Be amazed by the abundant wildlife including over 160 bird species bird list
- Really earn your carbon credits with tree planting at Rose Gums. Further details can be provided.

Day 3

Atherton Tablelands to Cooktown (Rental Vehicle)

Self drive to the Sovereign Resort in Cooktown on the inland road – drive time approximately 4 hours, sealed road. This route is west of the Great Divide and goes through cattle and mining country. Enroute, you may wish to stop for lunch at the famous Palmer River Roadhouse. Note that there are few options for petrol and food on this road.

Originally constructed in 1874, at the port end of Charlotte Street, The Sovereign Resort is now transformed into a comfortable resort style hotel. There is a beautiful free form swimming pool set amidst award winning landscaped tropical gardens. Resort facilities include an a la carte restaurant - the Balcony Restaurant, The Quarterdeck Cocktail Bar and The Café Bar. Cooktown is the gateway to Cape York Peninsula in Far North Queensland. The Resort is centrally located to all historic sights, wharf and all amenities. Game fishing, reef fishing, diving and snorkelling on the local reefs are rated with the best in world.

Spend the afternoon at your own leisure in Cooktown.

Accommodation: The Sovereign Resort Hotel x 3 nights
(Resort Room)

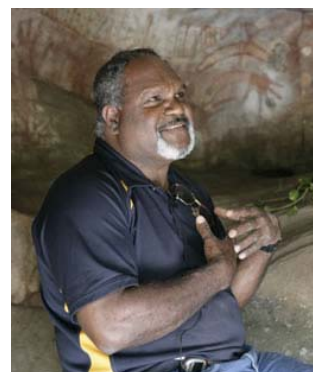
Day 4

7.45am

Half Day with Willie Gordon (Private Tour)/Afternoon at Leisure

Spend half a day with your own private guide exploring Rock Art, Bush Tucker and Bush Medicine.

Now listed as One of Australia's Ultimate Must-Do Experiences, enjoy an award-winning private tour in the company of Aboriginal Elder, Willie Gordon. Willie will take you to visit his ancestral rock art sites, set in stunning countryside high in the hills outside Cooktown and normally inaccessible to the public. Here Willie, the traditional story-keeper of the Nugal-warra clan, shares the stories behind the art, and explains how the paintings speak of the essence of life and the lores of his people. With his great smile and infectious laugh, Willie gives an amazing insight into Aboriginal society and spirituality, and has you thinking about your own relationship with the land, and how the lores of his people can apply to us all today.



1:15pm


At the end of the tour please you will be returned to the hotel. Spend the afternoon at your own leisure.

Day 5

Day at Leisure in Cooktown (Rental Vehicle)

Spend today at your own leisure in Cooktown.

Suggested sights to visit (own arrangements and expense);

- Cook Worship - Memorials and Lighthouse - Other Memorials -
 - The James Cook Museum - The museum building was originally St Mary's Convent. A magnificent two-storey structure it was constructed in the belief that the town would become one of the great centres of Australia. The elaborate cast-iron columns and balustrades reflect a sense of certainty which seems strange when observed from the Cooktown of a century later.
- 
- The Cooktown Sea Museum - Apart from the many interesting objects inside the building there are, in the grounds, a number of anchors, a gold skip from the Palmer River, a lakatoi from Papua New Guinea and a bark canoe.
 - Black Mountains National Park - 28 kilometres to the south of the town these strange mountains feature huge granite boulders blackened by surface lichen. They are of special significance to the local Aborigines due to their connection with the legend of Kalcajagga, which recounts a feud between two brothers for the love of a girl.

Day 6

Cooktown to Alkoomie Station (Rental Vehicle)

Self drive to Alkoomie Station today.

Alkoomie is a 45,000 acre working cattle station just 30 minutes from Cooktown. The homestead is built on an escarpment 1,500 feet above sea level atop Mt Dickson and offers unimpeded breathtaking views across the Endeavour River Valley to Cooktown out to the Great Barrier Reef and the shipping channel of the Coral Sea.

The drive to Alkoomie is through open savannah forest, typical of Cape York Peninsula. You then ascend the escarpment – this is a 4WD only road. Once on top of the escarpment the true beauty of Alkoomie unfolds. A unique Aussie experience as you watch, learn and assist with the cattle round-up alongside the working cattle dogs.

Spend your time here at your own leisure enjoying activities at Alkoomie Station. You can do as little or as much as you choose. A diverse landscape rich with flora and fauna creates a unique ambience, inviting you to relax and soak up your surroundings. For the adventurous, Alkoomie offers a range of activities, including but not limited to, the following (additional costs may apply):

- Working cattle dogs rounding up the cattle.
- Bush Walks to explore your unique surroundings. Whether on a gentle stroll or more energetic hike, you will discover some of the region's amazing native flora, including beautiful orchids and the ancient cycads and grasstrees.
- The iconic Cooktown Orchids can be seen flowering, in their natural habitat, at various times throughout the year.
- Go swimming in one of Alkoomie's natural rock pools and waterfalls.
- Tee off from the 1,500ft escarpment, before playing a round on Alkoomie's 4-hole golf course.
- Feed the farm animals.
- Enjoy stunning, sunset views from the Alkoomie escarpment as you unwind with wine and cheese.
- Star gaze through a telescope; the heavens will never have seemed closer.
- Enjoy a real outback dining experience: Dinner cooked in the camp oven and eaten around the campfire, accompanied by a selection of local yarns

and history.

- Enjoy a selection of the region's finest seafood and beef with a patio barbecue dinner.
- Bicycle ride the Dickson Range.
- Have a match of Boche Bowls in the cool of the afternoon.
- Or simply do nothing at all: Relax at Alkoomie, where you are closer to heaven than earth.

Accommodation: Alkoomie Station x 3 nights
(Standard Room)

Day 7-8

Days at Leisure at Alkoomie Station (Rental Vehicle)

Day 9

Alkoomie Station to Daintree (Rental Vehicle)

Self drive to Heritage Lodge in the Daintree along the coastal road today. Shortly after you depart Cooktown, you leave the sealed road and begin a driving adventure on one of Australia's most legendary roads, the coastal Bloomfield track. Take a picnic lunch with you, because facilities for food and petrol are extremely limited. The unsealed road goes through some of the most stunning rainforest country you will ever see – and you never know what might be on the road just ahead - A giant python (harmless) or a flock of colourful birds? Test your driving skills as you cross many beautiful little streams. But don't get out for a dip – the area has many dangerous snakes, as well as salt water crocodiles. Do pause to see the Bloomfield Falls – perhaps enjoying your picnic lunch here. (note: if you feel you are unable to drive a manual 4WD, we can alter this trip so that you fly from Cooktown back to Cairns, and then drive north into the Daintree Rainforest – additional cost.)

Nestled deep within Heritage Listed Rainforest, Daintree Wilderness Lodge offers its guests and visitors a true rainforest experience. With only 7 cabins each surrounded by beautiful lush rainforest, the property offers a complete natural hideaway. Each cabin was built by hand, set on stilts to diminish the impact on the rainforest, leaving it in pristine quality for our guests to enjoy. With walkways leading to each individual cabin, a balcony and a skylight within the cabin, guests are guaranteed privacy and tranquillity.

The lodge has many frequent endemic visitors due to its pristine location. The Southern Cassowary is often spotted by guests along with the Black and White Striped Possums, Boyd Forest Dragons and a beautiful array of frogs and birds.



Located only 2 hours north of Cairns and 1 hour north of Port Douglas, Daintree Wilderness Lodge is centrally located to all major tourist attractions including the Daintree River, Daintree National Park and Cape Tribulation.

The property offers personalised service and friendly hospitality to all guests and welcome visitors from around the world. With fluency in three languages including English, African and German.

The property has been awarded Advanced Eco-Accreditation to show their commitment to preserving this pristine and beautiful part of Australia.

Accommodation: Daintree Wilderness Lodge x 2 nights
(Rainforest Cabin)

Day 10
(FB)

Daintree: suggested activities

The Daintree Wilderness Lodge is centrally located within the Daintree Cape Tribulation National Park, and there offers many options for things to do. A two-hour hike from the lodge will take you to Alexandra Falls. It's not for the faint of heart, but the Lodge will pack a picnic lunch for you. Or, explore the Cape Tribulation area. Handy to the Lodge is gorgeous Thornton Beach (relax and do some beachcombing). Go croc spotting on Cooper Creek, which has some of the most pristine mangrove habitats in Australia. Go horseback riding through rainforest and beach, with morning tea and swim. Visit the Trib Valley Fruit Farm. Or just stroll in the rainforest.

Day 11
(FB)

Daintree to Port Douglas (Rental Vehicle)

Continental breakfast will be provided for you daily at the Heritage Lodge.

Self drive to Port Douglas today. Enroute you may wish to stop at Mossman Gorge. In Port Douglas, time permitting, visit the Rainforest Habitat!

Thala Beach Lodge is a proud member of the elite "Small Luxury Hotels Of The World", and very environmentally sensitive development that comprises of a central building complex and a collection of 85 private deluxe bungalows built high up on timber poles amongst the treetop canopy. The Lodge is situated on 145 acres and fronts a spectacular and private 2 kilometre sandy beach, looking out to the Great Barrier Reef.

Opened in June 1998, the Lodge sets new standards in guest comfort perfectly blended in with the precious ecological biodiversity of the region. Thala Beach Lodge is located at Oak Beach 10 minutes from Port Douglas, and reached by a superb 45 minute drive from Cairns airport along the scenic Captain Cook highway overlooking the Coral Sea. Thala Beach is serviced by a shuttle 4 times a day to the nearby world famous resort village of Port Douglas.



Your 2 night stay includes:

- Knowledgeable local experts to coordinate & personalise your "Thala Experience"
- Star Gazing at Thala's specially designed observatory, & evening presentations by local specialists
- Bird watching, & Nature Walks with Thala's guides
- Nature photography presentation and slide evening with a professional photographer
- Transfer service to and from Port Douglas scheduled daily

Accommodation: Thala Beach Lodge x 2 nights
(Deluxe Eucalypt Bungalow)

Day 12
(L)

Luxury Sailing & Snorkel Cruise (Scheduled Cruise)

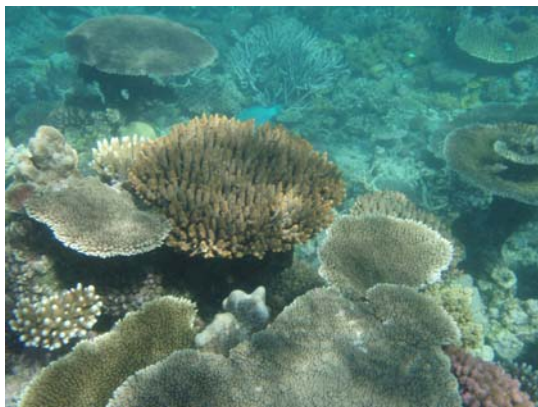
Please meet your Synergy representative in the foyer for your transfer to the marina. Synergy Reef Sailing offers a full day luxury sail & snorkel cruise for a maximum of twelve pampered passengers on board Synergy II. Departing daily, this is a spectacular and memorable day with a difference. This exclusive, luxury boat will whisk you off to a dynamic reef ecosystem bursting with a huge variety

of exciting marine life including over 1500 species of fish and 460 varieties of coral.

Meals are a gourmet affair like nothing else seen on the Outer Reef because they're freshly cooked on board, served al fresco on the split level rear deck. A fine selection of champagne, wine, beer spirits and cocktails are also available from our extensively stocked bar.

Inclusions;

- Delicious pastries served with tea & freshly brewed coffee
- A leisurely 2 hour sail to the Great Barrier Reef
- Alfresco gourmet BBQ lunch cooked on board the vessel
- Over three and a half hours at one spectacular reef
- Snorkeling equipment and tuition
- Guided snorkelling tour
- Lycra suits, wetsuits and floatation devices
- Fruit and gourmet cheese platters
- Government Environmental Management Charge



Available Extras;

- Bottled water, soft drinks and fully stocked bar with Australian and imported beers and wines

Day 13

Port Douglas to Cairns Airport (Self Drive)/Depart Cairns

Self drive to the Cairns Airport today and return the rental vehicle to the Hertz Parking Bay in time for your departure flight.

Depart Cairns.

END OF SERVICES

COST per person, double occupancy: USD \$4,224.00*

*based on the exchange rate as of May 1, 2010 and subject to change.

Subject to confirmation of all arrangements.

Inclusions:-

- Accommodation based in 3 & 4 star properties with private facilities
- Transfers as specified
- Rental car inclusions as specified in the itinerary
- Meals only as indicated
- Entry fees & touring to attractions as specified in the itinerary
- Emergency phone assistance
- Australian Goods & Services Tax

Exclusions:-

- **Rates not valid during all Australian Special Events – (including New Years Eve in all cities etc) - all dates yet to be confirmed**
- International and Domestic Airfares
- Meals not indicated on the itinerary
- Rental car exclusions as specified in the itinerary
- Beverages with meals
- Items of a personal nature i.e. phone calls, liquor, and laundry
- Use of hotel rooms before/after normal check in/out times or pre-registration
- Costs of optional touring
- Any services not mentioned in the itinerary
- Hotel/Airport Porterage
- Personal travel insurance (baggage/medical/tour cancellations)
- Tips or gratuity

- Unforeseen expenses due to last minute airline rescheduling or delays (inclusive of baggage delay, missed departure and loss of passport & cabcharge vouchers)
- Medical or hospital expenses
- Unfortunately due to world fuel price fluctuations, increases in touring costs may occur